



**IPSWICH**  
BOROUGH COUNCIL

# AIR POLLUTION

**Andrew Coleman**  
Environmental Health Officer

# WHAT IS AIR?

You cannot see or taste air, but it is all around us. When we feel the wind blowing, that is just fast moving air.

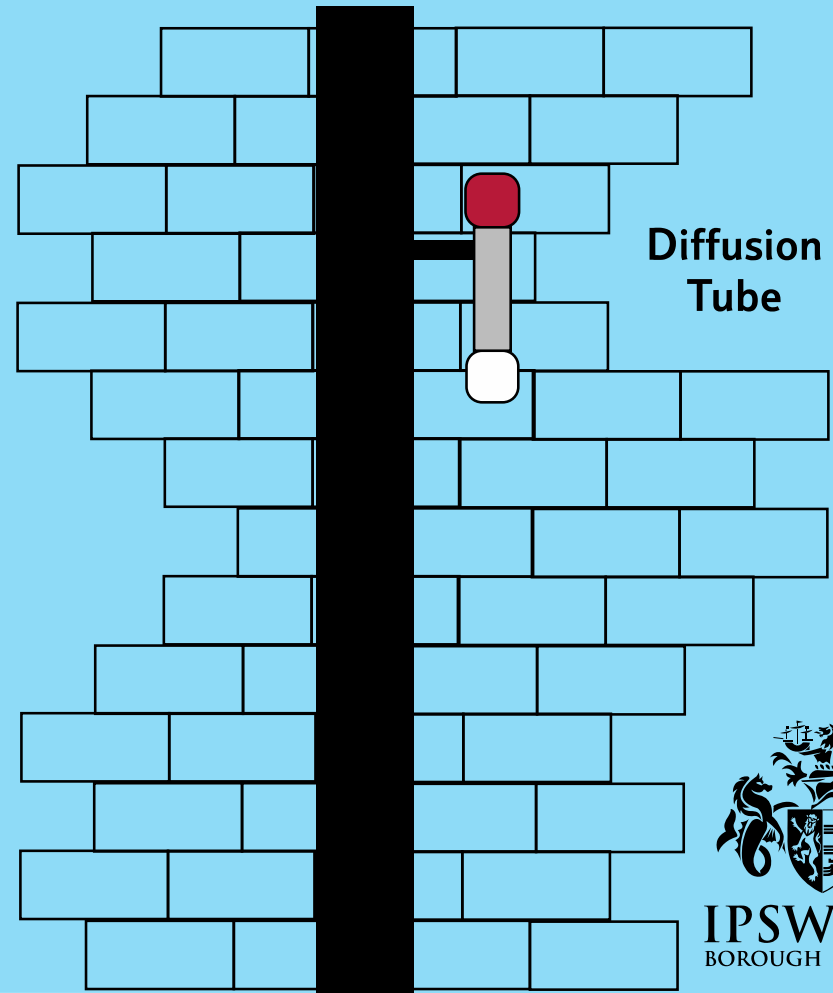
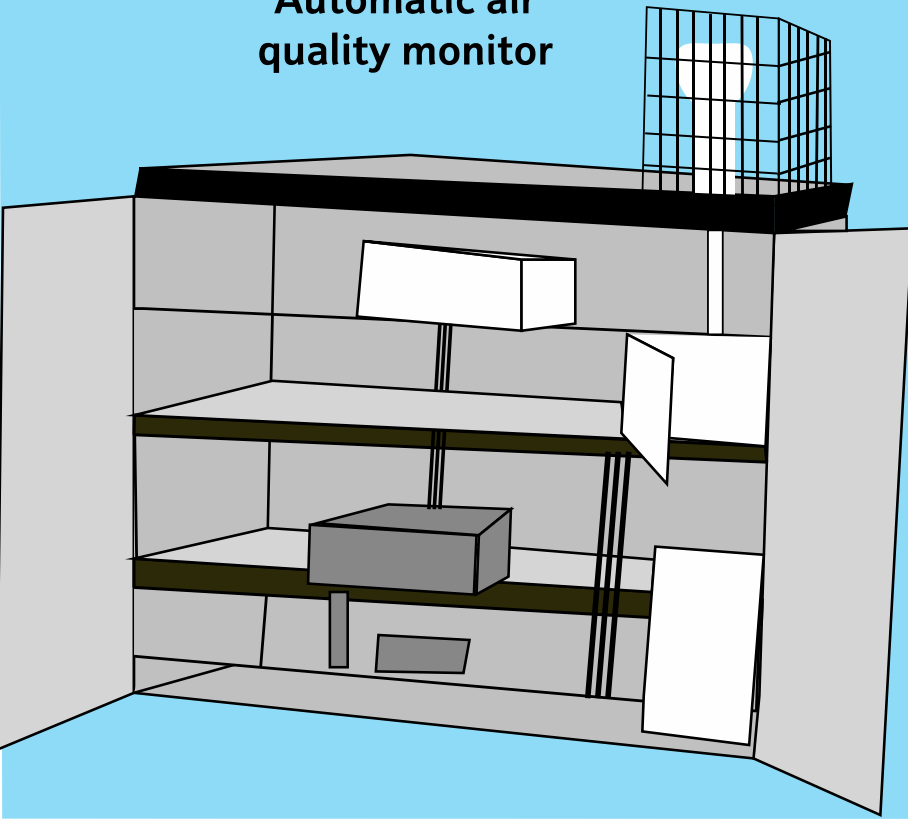


Air is made up mostly of gases called oxygen and nitrogen.



# How do we monitor if the air is clean?

Automatic air quality monitor



# Why is clean air important?

OXYgen



We need to breathe air as it contains oxygen which is vital for us to live! If air is dirty it can be bad for our health and the environment.

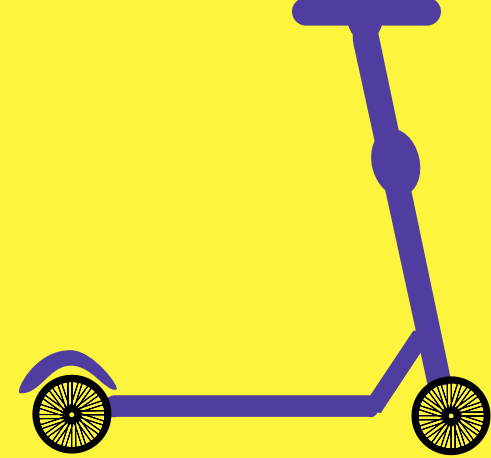
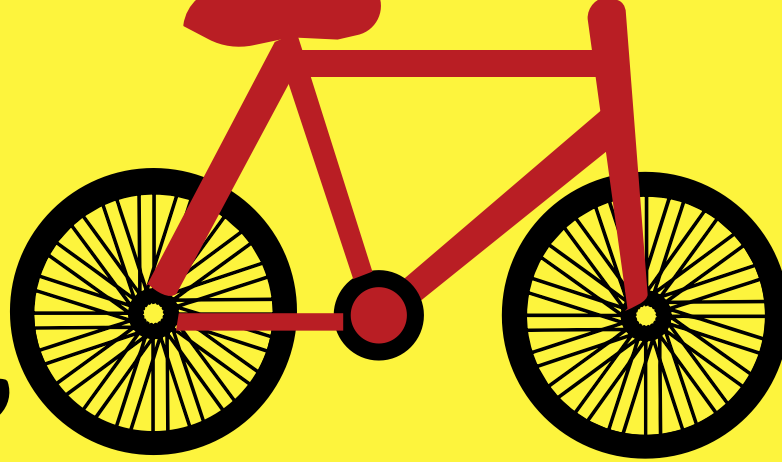


IPSWICH  
BOROUGH COUNCIL

What is one of the worst sources of pollution in towns?

**TRAFFIC!**





WALK

CYCLE

SCOOT

How can we keep the air clean?

Walk, scoot or cycle when you can and leave the car at home!  
Ask adults nicely to switch off engines when not moving!



IPSWICH  
BOROUGH COUNCIL

# What can we do to keep ourselves healthy?

Walk or cycle to school on quiet roads,  
away from traffic jams.





?



CAUSE

EFFECT

SOLUTION

Cycling to school

Driving to school

Nitrogen dioxide

Leaving an engine running

Heart problems

Switching off engines if not moving

Walking to school

Asthma

Breathing problems

Walking or cycling along quiet roads

Particulates

ScOOTing to school





# Clean Air Day

20<sup>th</sup> June 2019



# What are we doing for Clean Air Day?

Official Supporter



- Five day 'Clean Air' challenge – 17<sup>th</sup> – 21<sup>st</sup> June 2019
- Challenge to walk/cycle/scoot to & from school every day
- Free 10-day sports pass
- Chance to win a free 1 month iCard



# What are we doing for Clean Air Day?

- Speaking to drivers outside the school
- Look for drivers with their engines on
- Myth-busting!



No Idling Event Volunteers Toolkit

Location: \_\_\_\_\_

**When did the driver switch off?** Tally how many vehicles you've engaged

| Vehicle              | Before we asked | When we asked | After the myth busting | Didn't switch off | N/a |
|----------------------|-----------------|---------------|------------------------|-------------------|-----|
| Car                  |                 |               |                        |                   |     |
| Van                  |                 |               |                        |                   |     |
| Taxi                 |                 |               |                        |                   |     |
| Waste Compactor      |                 |               |                        |                   |     |
| Motorbike            |                 |               |                        |                   |     |
| Ambulance            |                 |               |                        |                   |     |
| SUV                  |                 |               |                        |                   |     |
| Lorry                |                 |               |                        |                   |     |
| Refrigerated vehicle |                 |               |                        |                   |     |
| Bus/Coach            |                 |               |                        |                   |     |
| Minibus              |                 |               |                        |                   |     |

No. of people engaged (how many people in the vehicles)

How many people pledged to turn the engine off in the future?



# Myth-busting!



MYTH – Starting a vehicle uses more fuel than letting it idle



FACT – it is less polluting to turn your engine off and restart it after a minute or longer than to leave it idling



MYTH – Idling is good for your engine



FACT – Idling makes an engine dirtier and increases wear and tear



# Myth-busting



MYTH – I need to keep my engine running to stay warm



FACT – Engines stay warm for up to an hour after being switched off. Turning off your engine and leaving the ignition on and the fan blowing will provide warm air for some time



MYTH – Idling doesn't cause much harm



FACT – Idling vehicles makes air pollution worse and contributes to global warming



Thank you!



**IPSWICH**  
BOROUGH COUNCIL